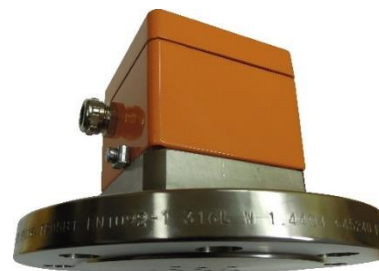


Technical Data

High temperature probes



| Article | High temperature probe HTS04GKD | High temperature probe HTS04FLD80 | High temperature probe HTS04FLD100 |
|----------------------------|---|-----------------------------------|------------------------------------|
| Article number | 1205 | 1203 | 1204 |
| Application purpose | Temperature measurement in the process with several measuring points. Application in the chemical industry | | |
| General information | | | |
| Material housing | aluminium casting, 100 x 100 x 80mm | | |
| Material connection | AISI 316L-W1.4404/1.4435 V2A | | |
| sensor tube | AISI 316-W.1.4401 V2A MgO- sheathed cable 4.5mm | | |
| Number of sensors | max. 7 | max. 11 | max. 16 |
| Weight housing | 1.5kg | 8.4kg | 8.5kg |
| Weight sensors | ca. 70g / sensor / m | | |
| Tensile load sensors | max. 10kN | | |
| Functional data | | | |
| Operating principle | Analogue temperature probe | | |
| Sensor type | MgO sensor tube Pt10'000, Pt1000, Pt100 | | |
| Bending radius sensor tube | 22.5mm | | |
| Length sensor tube | 0.1m to 30m | | |
| Measuring range | -99°C to 400°C | | |
| Accuracy | class B (DIN EN 60751) | | |
| Process connection | 1½" thread | DN80 PN16 | DN100 PN16 |
| Process pressure | max. 30 bar | max. 16 bar | |

| Electrical Data | | |
|--|---|---------------------------------------|
| Connection | 2-wire / 3-wire / 4-wire | |
| Max. sensor current | Pt 10'000: 100uA Pt 1000: 500uA Pt 100: 1mA | |
| Connection data for intrinsically safe systems | Ui: max. 10V _{DC} (Gas-Ex: max. 1.5V _{DC}) Ii: max. 250mA Pi: max. 15mW / sensor Li: max. 300uH Ci: max. 200nF | |
| Temperature range | | |
| Max. ambient temperature housing | -20°C to +90°C | |
| Max. surface temperature housing | -20°C to +90°C (T5) -20°C to +120°C (T4) | |
| Process | -50°C to +90°C (T5) -50°C to +125°C (T4) -50°C to +190°C (T3) -50°C to +285°C (T2) | |
| Max. temperature increase | 5K / sensor | |
| Storage | -20°C to +60°C (max. 2 years) | |
| Safety relevant data | | |
| IP protection class | IP66 (housing) IP68 (sensor tube) | |
| ATEX certification 2-wire / 3-wire | Ex II 1D Ex ta IIIC T290°C Da Ex II 1/2D Ex ta/tb IIIC T290°C Da/Db | Ex II 1/2D Ex ta/tb IIIC T290°C Da/Db |
| ATEX certification 4-wire | - | |